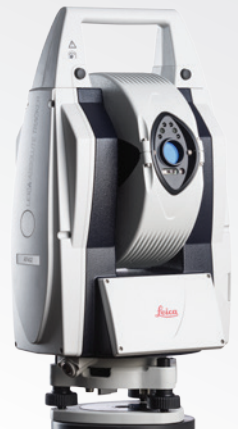


Leica Geosystems
Metrology Products
Catalog Version 1.3



HEXAGON
METROLOGY



Leica Geosystems
Metrology Products
Catalog Version 1.3

This catalog contains the complete range of products and accessories available for Leica Geosystems Absolute Trackers and Leica Geosystems Industrial Theodolites & Laser Stations. Regardless of your particular application and the Leica Geosystems Metrology Products you use, we have you covered.

All of our products and accessories offer the same top-notch, no-nonsense design and quality you expect from Leica Geosystems.

If you have any questions about our products or accessories, please contact your authorized sales person to receive competent guidance and make an appropriate purchasing decision.

Sincerely,

Your Leica Geosystems Metrology Products Team

8

Leica Absolute Tracker

Leica Absolute Tracker AT930
Leica Absolute Tracker AT960-MR
Leica Absolute Tracker AT960-LR
Leica Absolute Tracker AT960-XR

10

Portable CMM

Leica T-Probe
Styli and Extensions
Compensation Tools
Power Cables and Battery
Leica T-Mac
Leica T-Cam with Accessories
Leica T-Scan 5 with Accessories
Leica T-Scan with Accessories

26

Leica Absolute Tracker Accessories

Tracker Stand
Cables and UPS
Remote Control Equipment
Levelling Equipment
Overview Camera Equipment
MeteoStation and Accessories
Measuring Cart and Shipping Container

36

Leica Absolute Tracker AT402

Leica Absolute Tracker AT402
AT Controller 400
Leica B-Probe
Power Supply
Remote Control Equipment
Cables
Tripods and Stands
Tribrachs

44

Reflector

Corner Cube
Tripleprism Reflector
Tape Target Reflector
Special Reflectors and Holders
(Leica TDRA6000 only)
Targets for Multiple Theodolite Systems
Compensation and Field Check Tools
Reflector Holders

55

Reflector Holders

1.5" Reflector Holders
0.5" Reflector Holders
Miscellaneous



64 **Industrial Theodolite and Laser Station**

Leica TM6100A Motorized
Industrial Theodolite

Leica TDRA6000 Motorized
Industrial Laser Station



66 **Industrial Theodolite and Laser Station Accessories**

Additional Options

Power Supply

Battery Chargers

Data Storage and Data Transfer

Power Cables

Data Transfer Cables and Converter

Tripods

Tribrachs

Eyepieces, Filters, DL2 Lasers

Targets

Autocollimation Accessories

Cables



78 **Metrology Software**

Spatial Analyzer

PC-DMIS Portable for Laser Trackers

DCP Solutions



82 **Leica Geosystems Service Centers**

84 **Hexagon Metrology Precision Centers**

Leica Absolute Tracker



576 861

Leica Absolute Tracker AT930

Absolute Tracker AT930 with Absolute Interferometer.

Distance range 80m*

The system consists of:

- AT930 Absolute Tracker incl. transportation case
- AT Controller (576 871)
- MPS21, Power Supply Unit (576 873)
- MCS11, Sensor Cable 1.5m (576 885)
- AT Quick Release Mount incl. Mandrel (576 338)
- MCA18, External Temperature Sensor 2m (576 888)
- Red-Ring Reflector (RRR) 1.5" (575 784)
- MSI26, Universal Stand Fixture (576 895)
- MAT33, Optical Cleaning Kit (576 898)
- Protective Sensor Cover

576 864

Leica Absolute Tracker AT960-MR

Absolute Tracker AT960-MR with Absolute Interferometer Distance range 40m and Probing range 20m.

576 863

Leica Absolute Tracker AT960-LR

Absolute Tracker AT960-LR with Absolute Interferometer Distance range 160m* and probing range 40m.

576 862

Leica Absolute Tracker AT960-XR

Absolute Tracker AT960-XR with Absolute Interferometer Distance range 160m* and probing range 60m*.

The systems 576 864, 576 863 and 576 862 consist of:

- AT960-MR, -LR or -XR Absolute Tracker incl. transportation case
- AT Controller (576871)
- MPS21, Power Supply Unit (576 873)
- MCS11, Sensor Cable 1.5m (576 885)
- AT Quick Release Mount incl. Mandrel (576 338)
- MCA18, External Temperature Sensor 2m (576 888)
- Red-Ring Reflector (RRR) 1.5" (575 784)
- MSI26, Universal Stand Fixture (576 895)
- MAT33, Optical Cleaning Kit (576 898)
- Protective Sensor Cover

* typical measurement volume (Ø)



Leica Absolute Tracker Controller

AT402	
AT930	std.
AT960-MR	std.
AT960-LR	std.
TDRA6000	
TM6100A	

576 871 **Leica AT Controller**
The Leica AT Controller is compatible with Leica Absolute Tracker AT930 / AT960 series. The 576 873 MPS21 Power Supply Unit and 576 895 MSI26, Universal ATC Stand Fixture has to be ordered separately.

AT402	
AT930	std.
AT960-MR	std.
AT960-LR	std.
TDRA6000	
TM6100A	

576 895 **MSI26, Universal ATC Stand Fixture**
The Universal AT Controller Stand Fixture with reusable Velcro strap (0.52m) is compatible with:
- AT Controller (576 871, 576 368)
- MPB25, Battery external Li-Ion 42V/7.4Ah (576 875)



Leica T-Probe



576 186

Leica T-Probe

3rd generation Leica T-Probe is a portable CMM solution for armless and wireless probing. The handy and light weight measurement probe with configurable function buttons allows measurements in small and large measurement volumes with minimal preparation time. The measurement range of the Leica T-Probe is up to 15 m in all directions. The Leica T-Probe comes with

- ruby ball stylus d=6 mm
- Leica T-Probe Stylus Adaptor
- Stylus Compensation Tool
- 20m Cable
- Power Supply for Battery
- Replacement Battery
- Transportation Case

AT402
AT930
AT960-MR
AT960-LR
TDRA6000
TM6100A

opt.
opt.

Styli & Extensions



576 231

Leica T-Probe Stylus Kit

Recommended stylus kit for Leica T-Probe 2nd generation. Comes with 5 different styli:

- Scribe Stylus r=0.1 mm - M2
- Ruby Ball Stylus d=3 mm - M5
- Ruby Ball Stylus d=6 mm - M5
- Ceramic Hemispherical Stylus d=0.5 in - M5
- Ceramic Hemispherical Stylus d=1.5 in - M5

3 styli extensions:

- 100 mm - M5 Carbon Fibre - stem d=20 mm
- 200 mm - M5 - Carbon Fibre - stem d=20 mm
- 40 mm - M5 - Carbon - stem d=11 mm

2 Leica T-Probe Stylus Adaptors - M5 with precision Quick Release for Self Identification, Stylus Tools for M2-M3/M4/M5 Threaded Styli and Leica T-Probe Stylus Kit Case

AT402
AT930
AT960-MR
AT960-LR
TDRA6000
TM6100A

opt.
opt.

AT402	
AT930	
AT960-MR	opt.
AT960-LR	opt.
TDRA6000	
TM6100A	

- 576 211 **Leica T-Probe Styli Kit Case**
For standard configuration (empty)



AT402	
AT930	
AT960-MR	opt.
AT960-LR	opt.
TDRA6000	
TM6100A	

- 576 212 **Leica T-Probe Stylus Adaptor – M5**
Precision quick release adaptor for Leica T-Probe styli to remove and attach styli without re-calibration. The stylus adaptor has built in intelligence to support stylus self identification



AT402	
AT930	
AT960-MR	opt.
AT960-LR	opt.
TDRA6000	
TM6100A	

- 576 403 **Punch Tool – M5**
The Punch Tool is an accessory for the Leica T-Probe, it is a stylus that is used for laying out scribe lines (by punching) on the object for the next following manufacturing process



AT402	
AT930	
AT960-MR	opt.
AT960-LR	opt.
TDRA6000	
TM6100A	

- 576 408 **Tip**
Replacement Tip to Punch Tool 576 403
- 576 213 **Stylus Extension 100 mm – M5**
carbon fibre - stem ø 20 mm
- 576 214 **Stylus Extension 200 mm – M5**
carbon fibre - stem ø 20 mm
- 576 215 **Stylus Extension 400 mm – M5**
carbon fibre - stem ø 20 mm
- 576 216 **Stylus Extension 600 mm – M5**
carbon fibre - stem ø 20 mm





576 217 **Stylus Extension 40 mm – M5**
carbon - stem \varnothing 11 mm



576 218 **Stylus Extension 100 mm – M5**
carbon - stem \varnothing 11 mm



576 219 **Scribe Stylus – M2**
 $r=0.1$ mm



576 220 **Ruby Ball Stylus M5**
 \varnothing 3 mm



576 221 **Ruby Ball Stylus M5**
 \varnothing 6 mm



576 248 **Cylindrical Stylus – M2** 22.5 mm
 \varnothing 3 mm

AT402	opt. opt.
AT930	
AT960-MR	
AT960-LR	
TDRA6000	
TM6100A	

AT402	opt. opt.
AT930	
AT960-MR	
AT960-LR	
TDRA6000	
TM6100A	

AT402	opt. opt.
AT930	
AT960-MR	
AT960-LR	
TDRA6000	
TM6100A	

AT402	opt. opt.
AT930	
AT960-MR	
AT960-LR	
TDRA6000	
TM6100A	

AT402	opt. opt.
AT930	
AT960-MR	
AT960-LR	
TDRA6000	
TM6100A	

AT402	opt. opt.
AT930	
AT960-MR	
AT960-LR	
TDRA6000	
TM6100A	

- 576 222 **Edge Stylus – M5**
comes with Edge Sphere 0.5", Magnetic Stylus M5
and Compensation Sphere 0.5"



AT402	opt. opt.
AT930	
AT960-MR	
AT960-LR	
TDRA6000	
TM6100A	

- 576 223 **Stylus Tool** for M2 and M3 threaded styli
576 224 **Stylus Tool** for M4 threaded styli
576 225 **Stylus Tool** for M5 threaded styli



AT402	opt. opt.
AT930	
AT960-MR	
AT960-LR	
TDRA6000	
TM6100A	

- 576 226 **Stylus Adaptor M5 – M2**



AT402	opt. opt.
AT930	
AT960-MR	
AT960-LR	
TDRA6000	
TM6100A	

- 576 227 **Stylus Adaptor M5 – M4**



AT402	opt. opt.
AT930	
AT960-MR	
AT960-LR	
TDRA6000	
TM6100A	

- 576 228 **Stylus Adaptor M4 – M5**





576 143 **Ceramic Hemispherical Stylus M5**
ø 12.7 mm (0.5 in)

AT402	opt. opt.
AT930	
AT960-MR	
AT960-LR	
TDRA6000	
TM6100A	

576 144 **Ceramic Hemispherical Stylus M5**
ø 38.1 mm (1.5 in)



576 899 **MAC34, T-Probe Stylus Compensation Tool**
The MAC34 T-Probe Stylus Compensation Tool is used for on-site T-Probe Stylus compensations of various styli configurations. The MAC34 can be extended for Shank-Stylus with the T-Probe Stylus Shank Compensation Tool (576 247).

AT402	opt. opt.
AT930	
AT960-MR	
AT960-LR	
TDRA6000	
TM6100A	



576 900 **MAC35, Magnetic Device for MAC34**
On the MAC35 Magnetic Device the MAC34 T-Probe Stylus Compensation Tool can be fixed. The MAC35 holds on any magnetic surface. Magnetic force can be switched on and off.

AT402	opt. opt.
AT930	
AT960-MR	
AT960-LR	
TDRA6000	
TM6100A	



576 247 **Leica T-Probe Stylus Shank Compensation Tool**
The MAC57 T-Probe Stylus Shank Compensation-Tool is an accessory to compensation cylindrical probe stylus. The MAC57 accessory is mounted to the 576899 MAC34, T-Probe Stylus Compensation Tool.

AT402	opt. opt.
AT930	
AT960-MR	
AT960-LR	
TDRA6000	
TM6100A	

Power Cables and Battery

AT402	opt. opt.
AT930	
AT960-MR	
AT960-LR	
TDRA6000	
TM6100A	

575 972 **Cable Leica T-Probe, 10 m**
Reserve or replacement cable 10 m for the Leica T-Probe

575 973 **Cable Leica T-Probe, 20 m**
Reserve or replacement cable 20 m for the Leica T-Probe

576 185 **Cable Leica T-Probe, 50 m**
Reserve or replacement cable 50 m for the Leica T-Probe



AT402	opt. opt.
AT930	
AT960-MR	
AT960-LR	
TDRA6000	
TM6100A	

575 983 **Leica T-Probe Replacement Battery**



AT402	opt. opt.
AT930	
AT960-MR	
AT960-LR	
TDRA6000	
TM6100A	

734 195 **Leica T-Probe Battery Charger**



Leica T-Mac



576 400

Leica T-Mac Basic TMC30-B

The Leica T-Mac Basic is a specific developed sensor using Leica Geosystems' 6DoF technology to extend product offering. Leica T-Mac is designed to be used in combination with robots and large machines especially for positioning with high accuracy. Leica T-Mac has the possibility to mount it on a robot or machine and the housing already has 4 reflector nests included. These reflector positions can be used to establish a local coordinate system for object orientation or robot alignment. As an option a tool exchange interface from Sandvick can be adapted.

AT402	opt. opt.
AT930	
AT960-MR	
AT960-LR	
TDRA6000	
TM6100A	



576 410

Leica T-Mac Inspect TMC30-I

The Leica T-Mac Inspect is a 6DoF machine control probe for use with the Leica Absolute Tracker AT9xx series and Leica T-Cams. The Leica TMC30-I is the deluxe version of the probe for machine positioning, alignment, calibration and all inspection tasks (such as touch trigger or scanning). The Leica TMC30-I includes: Factory Parameter CD, User Manuals, Red Transportation Case and 20 m Basic Interface Cable. Leica T-Mac Inspect Cable must be ordered separately

AT402	opt. opt.
AT930	
AT960-MR	
AT960-LR	
TDRA6000	
TM6100A	

576 404

Leica T-Mac Upgrade Kit Basic to Inspect

This kit allows older Leica T-Macs to be upgraded in order to be used in new inspection systems. The upgrade kit only contains the internal hardware to convert a Leica T-Mac TMC30 to a Leica T-Mac TMC30-I, no additional cables or interfaces are included.

Please contact service to make sure that the existing Leica T-Mac is capable of receiving this upgrade. Leica T-Mac Inspect Cable must be ordered separately.

AT402	opt. opt.
AT930	
AT960-MR	
AT960-LR	
TDRA6000	
TM6100A	

AT402
AT930
AT960-MR
AT960-LR
TDRA6000
TM6100A

opt.
opt.

576 396

T-Mac Multiface TMC30-M

The T-Mac Multiface is a 6DoF machine control probe for use with any Leica 6 DoF Lasertracker. The TMC30-M is the multiface version of the TMC30-I for machine positioning, alignment, calibration and all inspection tasks (such as touch trigger).

The TMC30-M includes:

Factory Parameter CD, User Manuals, Transportation Case and 20 m Basic Interface Cable. T-Mac Inspect cable (576 509, 576 510) must be ordered separately.



AT402
AT930
AT960-MR
AT960-LR
TDRA6000
TM6100A

opt.
opt.

576 397

T-Mac Frame TMC30-F Starter Kit

The T-Mac Frame TMC30-F Starter Kit is a configurable 6DoF machine control probe for use with any Leica 6 DoF Lasertracker. The T-Mac TMC30-F Starter Kit can be used to create customized multisided probe configurations with anywhere from 1 to 4 frames (faces). To the T-Mac Frame TMC30-F Starter Kit up to 3 additional T-Mac Frames TMC30-F (576 398) can be connected in addition. The TMC30-F Starter Kit includes: One single T-Mac Frame TMC30-F with the CPU box, Factory Parameter CD, User Manuals, Cardboard Transportation Boxes and 20 m Basic Interface Cable.





576 398 **T-Mac Frame TMC30-F**

The T-Mac Frame TMC30-F is a configurable 6DoF machine control probe for use with any Leica 6 DoF Lasertracker. The TMC30-F can be used to create customized multisided probe configurations with anywhere from 1 to 4 frames (faces). The T-Mac Frame TMC30-F can be used to extend angular measuring range of the T-Mac Frame TMC30-F Starter Kit (576 397) or an existing T-Mac Basic TMC30-B (576 400) or T-Mac Inspect TMC30-I (576 410). For TMC30-B or TMC30-I the Frame extension interface for T-Mac (5003434) is needed (orderable from Laser Tracker Service Unterentfelden, Switzerland, please contact ps.ch@hexagonmetrology.com).

The T-Mac Frame TMC30-F includes:

One T-Mac Frame TMC30-F with Factory Parameter CD and the needed cable with a D - Sub 15 Pin plug. The T-Mac Frame TMC30-F does NOT include a mount for touch trigger inspection device. Please refer to 576 395 Upgrade TMC30-F to Inspect.

AT402	opt. opt.
AT930	
AT960-MR	
AT960-LR	
TDRA6000	
TM6100A	

5003 434 **Frame extension interface for T-Mac**

The Frame extension interface is required to connect additional T-Mac Frame TMC30-F (576 398) to an existing T-Mac Basic TMC30-B (576 400) or T-Mac Inspect TMC30-I (576 410). Orderable from Laser Tracker Service Unterentfelden, Switzerland only. Please contact ps.ch@hexagonmetrology.com

AT402	opt. opt.
AT930	
AT960-MR	
AT960-LR	
TDRA6000	
TM6100A	

AT402
AT930
AT960-MR
AT960-LR
TDRA6000
TM6100A

opt.
opt.

576 406

Automation Interface Controller

The Automation Interface Controller handles all of the switching for an automated machine control/inspection system consisting of multiple trackers, multiple probe devices and machine controller Digital I/O interfaces. Includes: Product CD, Power Cables and 5 m LAN Cable



AT402
AT930
AT960-MR
AT960-LR
TDRA6000
TM6100A

opt.
opt.

576 407

Automation Multiplex Box

The Automation Multiplex (MUX) Box allows on machine switching between the Leica TMC30-I and a Leica T-Scan for inspection purposes. Includes: 45 m MUX-Interface Cable (between the MUX Box and Automation Interface Box) and 1 m Laser Controller Cable



AT402
AT930
AT960-MR
AT960-LR
TDRA6000
TM6100A

opt.
opt.

576 395

Upgrade TMC 30-F to Inspect

The Upgrade consists of the Touch Trigger Box mount and needed cables between the unit and the T-Mac Frame TMC30-F Starter Kit CPU Box. The T-Mac Inspect cable must be ordered separately.



576 392	<p>Automation Robot Interface Kit</p> <p>The Automation Robot Interface kit package includes everything required to mount a T-Scan and/or a T-Mac on a robot or NC machine. It contains in detail:</p> <ul style="list-style-type: none">- Mechanical T-Scan adapter- Mechanical T-Mac adapter- Connection adapter to robot or machine (i.e. HSK63A)- Set of connection cables for automated use	<div><div>AT402 AT930 AT960-MR AT960-LR TDRA6000 TM6100A</div><div>opt. opt.</div></div>
576 394	<p>Laser Controller upgrade</p> <p>to use T-Scan as a manual and automated system without reconfiguration of the general hardware setup.</p>	<div><div>AT402 AT930 AT960-MR AT960-LR TDRA6000 TM6100A</div><div>opt. opt.</div></div>
576 411	<p>Ether CAT real time interface for ATC900</p> <p>consisting: EtherCAT Board, license key, firmware upgrade, 3 days training at Unterentfelden. Compatible with Leica Absolute Tracker AT901.</p>	<div><div>AT402 AT930 AT960-MR AT960-LR TDRA6000 TM6100A</div><div></div></div>

AT402	
AT930	
AT960-MR	opt.
AT960-LR	opt.
TDRA6000	
TM6100A	

6004 501 **TESA Touch Trigger Set for Leica T-Mac Inspect**

allows the Leica T-Mac TMC30-I to be used for touch trigger inspection. Includes: TESASTAR-rp probe head with Leica T-Mac Interface, 100 mm Probe Extension, 5mm Ruby Styli, Calibration Sphere and accessories. Note: For use in an automated setup an additional Automation Interface Box and required cables must be ordered as well



AT402	
AT930	
AT960-MR	opt.
AT960-LR	opt.
TDRA6000	
TM6100A	

576 509 **Leica T-Mac Inspect TMC30-I Cable, 10 m**

for connecting the Leica T-Mac Inspect TMC30-I to the Automation Interface Box or MUX box directly



AT402	
AT930	
AT960-MR	opt.
AT960-LR	opt.
TDRA6000	
TM6100A	

576 510 **Leica T-Mac Inspect TMC30-I Cable, 30 m**

for connecting the Leica T-Mac Inspect TMC30-I to the Automation Interface Box or MUX box directly



576 507

Trigger Cable, 2 m
for connecting the Automation Interface Box to the Laser Tracker Controller (ATC900). Compatible with Leica Absolute Tracker AT901.

AT402

AT930

AT960-MR

AT960-LR

TDRA6000

TM6100A



576 508

Trigger Cable, 25 m
for connecting the Automation Interface Box to the Laser Tracker Controller (ATC900). Compatible with Leica Absolute Tracker AT901.

AT402

AT930

AT960-MR

AT960-LR

TDRA6000

TM6100A



576 505

Automation Robot Cable, 20 m
for connecting the Automation Interface Box to the robotic or NC machine controller

AT402

AT930

AT960-MR

AT960-LR

TDRA6000

TM6100A

opt.

opt.



576 506

Automation Robot Cable, 50 m
for connecting the Automation Interface Box to the robotic or NC machine controller

AT402

AT930

AT960-MR

AT960-LR

TDRA6000

TM6100A

opt.

opt.

T-Scan 5 with Accessories

AT402
AT930
AT960-MR
AT960-LR
TDRA6000
TM6100A

opt.
opt.

576 187

Leica T-Scan 5

The T-Scan 5 Line Scanner system consists of:

- T-Scan 5 incl. transportation case
- Scanner Sensor Cable 10 m
- Scanner Controller incl. power cable
- MCA36, T-Scan Trigger/Probe Y-Cable 2 m (576 191)
- LAN Cable 2 m (RJ-45)
- MAP39, Horizontal Scanner Holder (576 188)
- MAC41, Reference Sphere \varnothing 50 mm (576 190)
- T-Collect Interface Software



AT402
AT930
AT960-MR
AT960-LR
TDRA6000
TM6100A

576 191

MCA36, T-Scan Trigger/Probe Y-Cable 2 m

The MCA36 T-Scan Trigger/Probe cable connecting the T-Scan 5 Controller to the AT Controller 900 (Probe-/ Trigger-Port) 576 310. Compatible with Leica Absolute Tracker AT901.



576 193

MCA38, T-Scan Sensor Extension Cable 10 m

With the MCA38 T-Scan Sensor Extension Cable, connecting the original T-Scan 5 Sensor cable, provides an extension of 10 m to a total T-Scan 5 sensor cable length configuration of 20 m (10 m + 10 m).



576 194 **MCA42, Scanner Cable 2 m**
The MCA42 Scanner Cable 2 m connecting the T-Scan 5 Controller (819 828) to the Automation Interface Controller (576 406).

AT402	opt. opt.
AT930	
AT960-MR	
AT960-LR	
TDRA6000	
TM6100A	

576 188 **MAP39, Horizontal Scanner Holder**

576 189 **MAM40, Vertical Scanner Holder**
The MAM40, Vertical Scanner Holder mounts to the Metrology Measurement Cart (576 181)



576 190 **MAC41, Reference Sphere Ø 50 mm**
Reference Sphere ø 50 mm with magnetic base for field check and alignment checks of the T-Scan system.



576 902 **MAA 46, T-Scan Elbow Adapter**

Leica T-Scan with Accessories

AT402
AT930
AT960-MR
AT960-LR
TDRA6000
TM6100A

576 383

Leica T-Scan TS50-A

Laser Scanner complete

- Sensor head with integrated reflectors, handle and cable
- Transportation box
- Scanner-calibration-files (CD-ROM)
- Scanner certificate
- Leica T-Scan controller unit
- Leica T-Scan interface kit
- Trigger cable (LTC plus to T-Scan Controller)
- Leica T-Scan Cable (rack to LTC plus [Probe])
- Sub-D Cable (9-pin, 2 m)
- Cross over ethernet Cable 2 x 1 m
- Leica T-Scan holder set
- Vertical holder with shield
- Horizontal Holder including Instant Temperature Compensation Kit
- SW T-Scan Collect
- Data collection, 3D online visualization of measurements
- Display of points, meshes or shaded meshes
- Import and export 3D-data (points, STL)
- Alignments of coordinate systems, 3D-filter Toolset, advanced cloud editing functions
- Global surface matching of point clouds
- Meshing tool
- Data post processing (programmable)
- Profile calculation
- Menu to verify accuracy, menu for calibration
- Optional visualization of hand scanner
- Compatible with Leica Absolute Tracker AT901 and older



AT402
AT930
AT960-MR
AT960-LR
TDRA6000
TM6100A

opt.
opt.

576 047

Reference Sphere with Certificate Ø 100mm

Reference Sphere with 100 mm diameter for field check and alignment checks of the Leica T-Scan system





Stands, Tripods & Interfaces

576 881

MST27, Stand Tube Extension

Designed for AT930 / 960 Absolute Tracker. The stand tube extension fits on the Leica Tracker Stand (575997), which has to be ordered separately.

AT402	opt. opt. opt.
AT930	
AT960-MR	
AT960-LR	
TDRA6000	
TM6100A	

576 901

MST36, Portable Metrology Tripod (Carbon)

Designed for Leica Absolute Tracker and Romer Absolute Arms. The MST36 has the following features and deliverables:

- Collapsible tripod-type with carbon legs
- Integrated bulls eye level
- 2x feet types (point and pad feet) incl.
- 1x Instrument adapter for AT930/960 (3.5"x8 thread)
- 1x Instrument adapter for AT40x and TPS6000 (5/8" thread)
- 1x Instrument adapter for Romer Absolute Arms (3.5"x8 thread)
- 3x integrated fixture positions for AT Controllers (576871, 576368) or MPB25, Battery external Li-Ion 42V/7.4Ah (576875)
- Adjustable Height: 83 - 118 cm (32.6 - 46.5")
- Weight: 14.2 kg (31.3 lb)

AT402	opt. opt. opt.
AT930	
AT960-MR	
AT960-LR	
TDRA6000	
TM6100A	

576 904

MAS52, Tripod Wheel Assembly Kit

A wheel assembly kit is available for additional portability for the MST36 Tripod (576901). The wheels are engaged and disengaged simply by unlocking the telescoping leg and rotating it, putting the wheel in an upper or lower position. Remark: The wheel options must be installed at the factory. Please order the wheel assembly kit together with the tripod.

AT402	opt. opt. opt.
AT930	
AT960-MR	
AT960-LR	
TDRA6000	
TM6100A	

575 997

Leica Tracker Stand

The Leica Tracker Stand is equipped with three levelling screws and shock absorbing wheels

AT402	opt. opt. opt.
AT930	
AT960-MR	
AT960-LR	
TDRA6000	
TM6100A	



AT402
AT930
AT960-MR
AT960-LR
TDRA6000
TM6100A

opt.
opt.
opt.

576 906

MAS54, Tripod Padded Bag

Add a durable black carrying bag for easy transport to and from the jobsite. This rugged nylon bag has padded sides and a structured bottom to protect the stand and accessories. Three convenient carrying options include handles, a shoulder strap, and built-in wheels with a tow handle. The wide mouth, double zippered opening makes for easy packing and unpacking. The bag is sized to fit the stand with dimensions of 40" (101.6 cm) long x 12" (30.5 cm) wide x 12" (30.5 cm) tall and is nicely branded with an embroidered Hexagon logo.



AT402
AT930
AT960-MR
AT960-LR
TDRA6000
TM6100A

opt.
opt.
opt.

576 349

Aluminum Tripod AT08

for easy demos, increased portability and reduction of total system weight. Aluminum Tripod for Leica Absolute Tracker with 3.5" x 8 thread interface. The tripod interface is compatible with 576 338 AT Quick Release Mount. Tripod height (working position): 815 mm (fix) Tilting axis height: 1430 mm Dimensions: 25 x 25 x 100 cm (folded) Weight: 10 kg (without AT Quick Release Mount) Special feature: cable fixation Note: For best stability and accuracy it is still recommended to use the standard Tracker Stand and Stand Extension



AT402
AT930
AT960-MR
AT960-LR
TDRA6000
TM6100A

opt.
opt.
opt.

576 338

AT Quick Release Mount

AT Quick Release for mounting a Leica Absolute Tracker on 576 337 AT Stand Extension, 576 336 AT Mounting Plate or any other compatible instrument stand with 3.5" x 8 thread adapter





576 336 **AT Mounting Plate**
allows to mount the Leica Absolute Tracker onto machine beds. The AT mounting plate does not include 576 338 AT Quick Release Mount, which is required

576 339 **AT Magnetic Mount**
allows to mount the Leica Absolute Tracker onto a magnetic surface. The AT Magnetic Mount does not include 576 338 AT Quick Release Mount and 576 336 AT Mounting Plate, which is required



576 885 **MCS11, Sensor Cable 1.5m**
AT930/960 Sensor Cable, 1.5m. Connects AT Controller to AT930/960 Absolute Tracker.

576 886 **MCS12, Sensor Cable 10m**
AT930/960 Sensor Cable, 10m. Connects AT Controller to AT930/960 Absolute Tracker.

576 887 **MCS13, Sensor Cable 30m**
AT930/960 Sensor Cable, 30m. Connects ATC900 Controller to AT930/960 Absolute Tracker.



576 888 **MCA18, External Temperature Sensor 2m**
The MCA18 External Temperature Sensor is an accessory for the AT930/960 Laser Tracker for measuring external Air- and/or Object temperatures. It connects to AT Controller. The temperature sensor is configured with a 2m cable and its tip is square shaped by 8x8x42mm with a borehole \varnothing 4.2mm to fix it to the object. Parameter: temperature range: -20...+80°C Accuracy: temperature: \pm 0.3°C

AT402	
AT930	opt.
AT960-MR	opt.
AT960-LR	opt.
TDRA6000	
TM6100A	

AT402	
AT930	opt.
AT960-MR	opt.
AT960-LR	opt.
TDRA6000	
TM6100A	

Power Supply, UPS

AT402	opt. opt. opt.
AT930	
AT960-MR	
AT960-LR	
TDRA6000	
TM6100A	

576 873 **MPS21, Power Supply Unit 576 871**
Power Supply unit for AT930/960 Absolute Tracker connects to ATC900 Controller (576 871). Input 80-264VAC to output 48VDC. The Power Supply Unit is compatible with 576 871 AT Controller and 576 875 MPB25, Battery external Li-Ion 42V/7.4Ah. For indoor use only.



AT402	opt. opt. opt.
AT930	
AT960-MR	
AT960-LR	
TDRA6000	
TM6100A	

576 875 **MPB25, Battery external Li-Ion 42V/7.4Ah**
External chargeable Li-Ion battery for AT930/960 Absolute Tracker. Connects to the AT Controller. The battery has a built-in charger technology. To charge the battery the 576 873 MPS21 Power Supply Unit is required (to be ordered separately). To mount the battery on stand/tripod the 576 895 MSI26, Universal ATC Stand Fixture has to be ordered separately.



AT402	opt. opt. opt.
AT930	
AT960-MR	
AT960-LR	
TDRA6000	
TM6100A	

575 992 **Uninterrupted Power Supply UPS (220 Volt)**
Power VA / W: 1100 / 700, input voltage tolerance: 160V / 294V adjustable to 150V / 294V via supplied UPS-driver software, frequency: 50 / 60 HZ auto-select, output voltage on battery power: 230V (adjustable to 200 / 220 / 240V vial supplied UPS-driver software, dimensions: 44 x 438 x 499 mm, weight: 16 kg



AT402	opt. opt. opt.
AT930	
AT960-MR	
AT960-LR	
TDRA6000	
TM6100A	

575 993 **Uninterrupted Power Supply UPS (110 Volt)**
Power VA / W: 1100 / 700, Input voltage tolerance: 92V / 138V adjustable to 80V / 153V via supplied UPS-driver software, frequency: 50 / 60 HZ auto-select, output voltage on battery power: 120V (adjustable to 100 / 120 / 127V vial supplied UPS-driver software, dimensions: 44 x 437 x 498 mm, weight: 16 kg





576 889

MCA19, External Temperature Sensor 10m

The MCA19 External Temperature Sensor is an accessory for the AT930/960 Laser Tracker for measuring external Air- and/or Object temperatures. It connects to AT Controller.

The temperature sensor is configured with a 10m cable and its tip is square shaped by 8x8x42mm with a borehole \varnothing 4.2mm to fix it to the object. Parameter:

Temperature range: -20...+80°C

Accuracy:

Temperature: $\pm 0.3^{\circ}\text{C}$



576 890

MCA20, External Temperature Sensor 30m

The MCA20 External Temperature Sensor is an accessory for the AT930/960 Laser Tracker for measuring external Air- and/or Object temperatures. It connects to AT Controller.

The temperature sensor is configured with a 30m cable and its tip is square shaped by 8x8x42mm with a borehole \varnothing 4.2mm to fix it to the object.

Parameter:

Temperature range: -20...+80°C

Accuracy:

Temperature: $\pm 0.3^{\circ}\text{C}$

576 192

MCA37, Automation Trigger Cable 2m

The MCA37 Automation Trigger cable connecting the T-Scan 5 Controller to the Automation Interface Controller (576 406).

576 194

MCA42, T-Scan Controller Autom.-Cable 2m

The MCA42 T-Scan Controller Automation Cable 2m connecting the T-Scan 5 Controller (819 828) to the Automation Interface Controller (576 406).

AT402	
AT930	opt.
AT960-MR	opt.
AT960-LR	opt.
TDRA6000	
TM6100A	

AT402	
AT930	opt.
AT960-MR	opt.
AT960-LR	opt.
TDRA6000	
TM6100A	

- 576195

MCA43, Automation Scanner Cable 50m
The MCA43 Automation Scanner Cable 50m connecting the T-Scan 5 (robot adapter) to the Automation Interface Controller (576 406) or to the Automation Multiplex Box (576 407)
- 576196

MCA44, Automation Scanner Cable 10m
The MCA44 Automation Scanner Cable 10m connecting the T-Scan 5 sensor (robot adapter) to the Automation Interface Controller (576 406) or to the Automation Multiplex Box (576 407)
- 576197

MCA45, T-Scan Sensor Autom.- Cable 50m
The MCA45 T-Scan Sensor Automation Cable 50m connecting the T-Scan 5 (robot adapter) to the T-Scan 5 Controller (819 828).
- 576878

MCA48, Automation Trigger/Probe Y-Cable
The MCA48, Automation Trigger/Probe Y-Cable connecting the AT960 Tracker Controller with the Automation Interface Controller (576 406). The y-ends of the cable must be extended with the standard T-Probe Cable (575 972, 575 973, 576 185) and Trigger Cable (576 507, 576 508) > to be ordered separately
- 576879

MCA49, Automation Interface Cable 50m
The MCA49, Automation Interface Cable 50m connecting the Automation Interface Controller (576 406) to the Automation Multiplex Box (576 407)
- 576903

MCA47, T-Scan Trigger/Probe Cable 2m
Connects AT960 Tracker Controller with T-Scan 5 Controller unit.
- 575 899

LAN Cable RJ-45, 5 m
LAN cable to connect Laser Tracker with application computer

Remote Control Equipment



575 757

Wireless RF Control
Wireless Radio Frequency Remote Control (2.4GHz), 4 custom programmable buttons, up to 45m/150ft range, USB interface, compatible with Windows XP or higher (32bit/64bit)

AT402	opt.
AT930	opt.
AT960-MR	opt.
AT960-LR	opt.
TDRA6000	opt.
TM6100A	opt.

575 965

Wireless IR Control
Receiver and infrared Remote Control. Set with product CD

AT402	opt.
AT930	opt.
AT960-MR	opt.
AT960-LR	opt.
TDRA6000	opt.
TM6100A	opt.

Compensation & Field Check Tools

576 893

MAC55, Invar Reference Bar 1000mm
The low thermal expansion length Reference Bar provides a stable length for use during laser tracker or scanner jobs. The reference bar provides the following features and content:

- Supports 0.5", 7/8" and 1.5" Reflectors
- Can be mounted on tripod (5/8" thread) or directly placed on the floor/table (3-point feet)
- Bar length uncertainty of +/-0.007mm (+/- 0.0003")
- Certificate included
- Case with contour-cut foam cushion interior
- Weight: Bar alone, x kg (x lbs); bar and case, x kg (x lbs)

AT402	opt.
AT930	opt.
AT960-MR	opt.
AT960-LR	opt.
TDRA6000	
TM6100A	



For Apple Devices (iPodTouch, iPads, iPhones) a free AT Remote App available from Apple App Store.
It can be used to remote control any Windows application. Download AT Remote App here: <http://itunes.apple.com/us/app/at-remote-app/id567070189?l=de&ls=1&mt=8>
More information and server software can be found here: http://metrology.leica-geosystems.com/en/Downloads_6843.htm?cid=3617

576 894 MAC23, 6D Compensation Kit

The MAC23 accessory is for on-site compensations of the integrated 3D and 6D Tracker system components. It consists of tripod interface (5/8" thread), compensation frame and light duty magnetic holder for tooling ball reflectors 0.5". For the process a 575739 Red-Ring Reflector 0.5" is required, which is not part of the kit.

576 898 MAT33, Optical Cleaning Kit

The MAT33 Optical Cleaning Kit does away with solvents, harsh cleaning products and messy lens tissues which can leave ugly and problematic smears that ruin the measurement quality. The MAT33 is suitable for cleaning AT930/960 Sensor optics and as well the Leica Reflectors. The Kit consists of:

- 1x Dust ex blower (167 119)
- 2x Cleaning tissues (771 349)
- 8x Cleaning swabs, larg (758 346)
- 5x Cotton swabs, small (724 954)
- 1x Cleaning brush (822 420)
- 1x Cleaning kit bag (821 236)



Measuring Cart and Shipping Container



576 891

MTC51, AT930/960 Transport Container

The Transport Container can hold:

- AT930/960 Absolute Tracker (576 861, 576 863, 576 864)
- AT Controller (576 871)
- MPS21, Power Supply Unit (576 873)
- MCS11, Sensor Cable 1.5m (576 885)
- AT Quick Release Mount incl. Mandrel (576 338)
- MCA18, External Temperature Sensor 2m (576 888)
- Red-Ring Reflector (RRR) 1.5" (575 784)
- MSI26, Universal Stand Fixture (576 895)
- MAT33, Optical Cleaning Kit (576 898)
- Protective Sensor Cover

AT402

AT930

AT960-MR

AT960-LR

TDRA6000

TM6100A

opt.

opt.

opt.

Empty Transport Container only. Accessories to be ordered separately.



576 348

Rack Mount Light Duty Case

The case is a light duty rolling rack unit. It has dual lids and rollerblade type wheels. The rack mount light duty case is versatile and can be equipped with e.g. a Leica AT Controller 900 or Leica T-Scan Controller or any other computer equipment, which fits the 4 unit height and 19" width rack system

Exterior depth: 57.785 cm (22.75 in)

Exterior width: 54.610 cm (21.50 in)

Exterior height: 27.305 cm (10.75 in)

Rack space units: 4 U

Rack depth (rail to lid): 48.260 cm (19.00 in)

Rack depth (rail to rail): 42.545 cm (16.75 in)

Lid depth: 5.715 cm (2.25 in)

Weight: 7.711 kg (17 lb)

576 896 MMC31, Metrology Measurement Cart

The MMC31 Cart is compatible for AT901 and AT930/960 Absolute Tracker. For the AT930/960 special controller fixture is included. Contains a shock absorbing 19" rack mounting for installation of controllers, UPS, and high speed computer. The rack mounting compartment is temperature regulated (build-in fan). The cart can be used like a regular measuring cart and in addition it can be reconfigured to a shuttle cart. The drawers are equipped with preconfigured foam inlays for storing accessories like reflectors, reflector supports, meteo stations, T-Probe styli and extensions... The main cart desktop can be extended with a foldable side-table.
L=1.20m, W=0.70m, H=1.10m

**576 897 MAA32, ATC 19"- Rack Fixture**

The 19"-Rack fixture is designed to hold the AT Controller from the AT930/960 series in standard 19"-rack systems.



Leica Absolute Tracker AT402

- 576 369
- Leica Absolute Tracker AT402**

including:

 - Leica AT402 sensor
 - AT Controller 400
 - MCS17 1.8 m Sensor cable
 - MCA15 2 m External temperature sensor
 - Tribrach
 - IR Remote Control
 - LAN cable
 - MSI26 Universal stand fixture
 - 2 batteries
 - Battery charger
 - AC adapter
 - Calibration certificate
 - Compensation SW
 - Transportation box

- 6009765
- AT402 Probing System**

Absolute Tracker AT402 bundled with B-Probe

Transportation Case

- 576 520
- MTC56 AT402 Trolley Case**

Trolley Case & Shipping Container for AT402 (not included) and optional Accessories (i.e. B-Probe case, Wooden Reflector Box, GKL341 Pro Charger or Application Notebook; not included)

Suitable for AT402 systems equipped with GKL311 chargers and MSI26 Universal Stand Fixture.

AT402	opt.
AT930	
AT960-MR	
AT960-LR	
TDRA6000	
TM6100A	



Controller

- 576 368
- AT Controller 400**

The AT Laser Tracker Controller 400 unit is used with the Leica Absolute Tracker AT402

AT402	opt.
AT930	
AT960-MR	
AT960-LR	
TDRA6000	
TM6100A	

- 576 895 **MSI26 Universal Stand Fixture**
 The Universal AT Controller Stand Fixture with reusable Velcro strap (0.52m) is compatible with:
- AT Controller (576 871, 576 368)
 - MPB25, Battery external Li-Ion 42V/7.4Ah (576 875)



Leica B-Probe

AT402

AT930
 AT960-MR
 AT960-LR
 TDRA6000
 TM6100A

opt.

- 576 511 **Leica B-Probe**
 The Leica B-Probe is an entry level, portable and wireless probing solution.
 The Leica B-Probe comes with
- Steel ball stylus 12,7 mm (0.5"),
 - Stylus compensation tool,
 - Stylus tool,
 - Micro-USB cable,
 - Calibration Certificate,
 - 4 X AAA batteries
 - Transportation case



Leica B-Probe Accessories

- 576 217 40mm Extension
- 576 218 100mm Extension
- 576 221 Ruby Ball Stylus 6mm
- 576 514 **Steel ball stylus**
 D = 12,7 mm (0.5"), L = 55 mm
- 576 225 **Stylus tool for M5 threaded styli**
- 576 512 **B-Probe Stylus Compensation Tool**
- 576 515 **Quick-charger Powerline 4**
 for AAA-batteries (EU, US, UK), cannot be delivered to all countries
- 576 513 **USB - micro-USB cable for B-Probe**
 Firmware updates via PC



Power Supply



793 975	GEB242 Battery Internal Li-Ion battery, 14.8V, 5.8 Ah	<div>AT402 AT930 AT960-MR AT960-LR TDRA6000 TM6100A</div> <div>opt. opt. opt.</div>
799 187	GKL341 multiple-bay charger Professional 5000 Multi-bay charger for up to 4x Li-Ion batteries GEB241/GEB242. The refresh functionality allows to re-align the battery capacity displayed after extensive usage. AC Adapter included.	<div>AT402 AT930 AT960-MR AT960-LR TDRA6000 TM6100A</div> <div>opt. opt. opt.</div>
799 185	GKL311 single-bay charger Professional 3000 Charger for one Li-Ion battery GEB241/GEB242, including AC Adapter and 12V car adapter.	<div>AT402 AT930 AT960-MR AT960-LR TDRA6000 TM6100A</div> <div>opt. opt. opt.</div>
576 377	MPS10 PoE+ Set The MPS10 PoE+ Set configuration provides electrical power, along with data, from the PC to the Leica Absolute Tracker AT402 over standard category 5m cable in an ethernet network. Content: PoE+ midspan, PoE+ module, 5 m ethernet cable	<div>AT402 AT930 AT960-MR AT960-LR TDRA6000 TM6100A</div> <div>opt.</div>

Remote Control Equipment

AT402	opt.
AT930	
AT960-MR	
AT960-LR	
TDRA6000	
TM6100A	

576 379

AT Remote Control 400

The wireless infra-red control unit is compatible with Leica Absolute Tracker AT402 and ATC400.

Content: Remote Control unit, 2 AAA-batteries



AT402	opt.
AT930	opt.
AT960-MR	opt.
AT960-LR	opt.
TDRA6000	opt.
TM6100A	opt.

575 965

Wireless Infrared Remote Control

4 custom programmable buttons, up to 20m/65ft range, USB interface, compatible with Windows XP or higher (32bit/64bit)



AT402	opt.
AT930	opt.
AT960-MR	opt.
AT960-LR	opt.
TDRA6000	opt.
TM6100A	opt.

575 757

Wireless RF Control

Wireless Radio Frequency Remote Control (2.4GHz), 4 custom programmable buttons, up to 45m/150ft range, USB interface, compatible with Windows XP or higher (32bit/64bit)



For Apple Devices (iPodTouch, iPads, iPhones) a free AT Remote App available from Apple App Store.

It can be used to remote control any Windows application. Download AT Remote App here:

<http://itunes.apple.com/us/app/at-remote-app/id567070189?l=de&ls=1&mt=8>

More information and server software can be found here:

http://metrology.leica-geosystems.com/en/Downloads_6843.htm?cid=3617

Cables



576 376 **MCS17, 1.8 m Sensor Cable**
compatible with Leica Absolute Tracker AT402
and ATC400

AT402	opt.
AT930	
AT960-MR	
AT960-LR	
TDRA6000	
TM6100A	



576 350 **MCA15, 2 m External Temperature Sensor**
The MCA13 external NTC Temperature Sen-
sor connects to the AT Controller 400 or the
standalone AT MeteoStation. The temperature
sensor is configured with a 2 m cable and its
tip is square shaped by 8 x 8 x 40 mm with a
borehole \varnothing 4.2 mm to fix it to the object. It can
be used as an air- and/or object- sensor.
Temperature range: -20...+50°C
Temperature: \pm 0.2°C

AT402	opt.
AT930	
AT960-MR	
AT960-LR	
TDRA6000	
TM6100A	



576 351 **MCA14, 10 m External Temperature Sensor**
The MCA14 external NTC Temperature Sen-
sor connects to the AT Controller 400 or the
standalone AT MeteoStation. The temperature
sensor is configured with a 10 m cable and its
tip is square shaped by 8 x 8 x 40 mm with a
borehole \varnothing 4.2 mm to fix it to the object. It can
be used as an air- and/or object- sensor.
Temperature range: -20...+50°C
Temperature: \pm 0.2°C

AT402	opt.
AT930	
AT960-MR	
AT960-LR	
TDRA6000	
TM6100A	



575 899 **LAN Cable RJ-45, 5 m**
LAN Cable to connect Laser Tracker with ap-
plication computer

AT402	opt.
AT930	
AT960-MR	
AT960-LR	
TDRA6000	
TM6100A	

Tripods and Stands

AT402	opt.
AT930	
AT960-MR	
AT960-LR	
TDRA6000	opt.
TM6100A	opt.

575 483

AT21 Aluminium Tripod

Robust, well-established tripod for general use and 5/8" thread. Suitable for Laser Stations, Theodolites and Laser Tracker field check equipment.

Instrument height: from 1.4 – 2.1 m (4.6 – 6.9 ft)
Weight: 11 kg (24.2 lb)



AT402	opt.
AT930	
AT960-MR	
AT960-LR	
TDRA6000	opt.
TM6100A	opt.

575 484

AT28 Aluminium Tripod

with adjustable centre column. Robust, well-established tripod for general use and 5/8" thread. Suitable for Laser Stations, Theodolites and Laser Tracker field check equipment.

Instrument height: from 1.4 – 2.8 m (4.6 – 9.2 ft)
Weight: 12 kg (26.4 lb)



AT402	opt.
AT930	
AT960-MR	
AT960-LR	
TDRA6000	
TM6100A	

576 349

AT08 Aluminum Tripod

for easy demos, increased portability and reduction of total system weight. Aluminum Tripod for AT Laser Tracker with 3.5" x 8 thread interface.

The tripod interface is compatible with 576 338 AT Quick Release Mount.

Tripod height (working position): 815 mm (fix)

Tilting axis height: 1430 mm

Dimensions: 25 x 25 x 100 cm (folded)

Weight: 10 kg (without AT Quick Release Mount)

Special feature: cable fixation

Note: For best stability and accuracy it is still recommended to use the standard tracker stand and stand extension



AT402	opt.
AT930	
AT960-MR	
AT960-LR	
TDRA6000	opt.
TM6100A	opt.

577 261

3½" x 8 to 5/8" x 11 Adapter

To mount a TPS or AT402 sensor on a heavy duty "Brunson" type stand





576 354 **MAS16 Stand Adapter**
fits on the AT Stand Extension from the Leica Absolute Tracker AT901. The Stand Adapter is designed in such way, that the tilting axis of the Leica Absolute Tracker AT402 is at the same height as the Leica Absolute Tracker AT901 when used on the AT Stand Extension

AT402	opt.
AT930	
AT960-MR	
AT960-LR	opt.
TDRA6000	
TM6100A	opt.

576 337 **AT Stand Extension**

575 997 **Leica Tracker Stand**



296 632 **GST20 Tripod, Telescopic, with Accessories**
Robust, well-established tripod for general use. Suitable for levels, lasers, Laser Stations and GPS. Extendible 180 cm (5.9 ft)
Weight: 6.4 kg (14.1 lb)



332 200 **GST4 Tripod Base**
for setting up GST Tripods on smooth surfaces

Tribrachs

AT402	opt.
AT930	
AT960-MR	
AT960-LR	
TDRA6000	opt.
TM6100A	opt.

576 352 **GDF 321-I, Tribrach Pro**
without optical plummet, light grey



AT402	opt.
AT930	
AT960-MR	
AT960-LR	
TDRA6000	opt.
TM6100A	opt.

576 353 **GDF322-I Industrial Tribrach**
with optical, plummet, light grey



Corner Cube



575 784 **Red-Ring Reflector (RRR) 1.5" ball with hardened steel surface**
Corner cube reflector with removable ring, protection cover for optic and certificate, in wooden box

AT402	opt.
AT930	opt.
AT960-MR	opt.
AT960-LR	opt.
TDRA6000	opt.
TM6100A	

575 739 **Red-Ring Reflector (RRR) 0.5" ball with hardened steel surface**
Corner cube reflector with removable ring, protection cover for optic and certificate, in wooden box

AT402	opt.
AT930	opt.
AT960-MR	opt.
AT960-LR	opt.
TDRA6000	
TM6100A	

567 311 **Red-Ring Reflector (RRR) 7/8" ball with hardened steel surface**
Corner cube reflector with removable ring, protection cover for optic and certificate, in wooden box

AT402	opt.
AT930	opt.
AT960-MR	opt.
AT960-LR	opt.
TDRA6000	
TM6100A	

All Red-Ring reflectors are also available in packs of two, five or ten. See information and specifications page 48.

576 244 **Break Resistant Reflector 1.5" (BRR)**
Break Resistant Reflector with collar, protection cover for optic and certificate, in wooden box
Material ball: Stainless steel, surface-hardened, magnetic. See information and specifications page 48.

AT402	opt.
AT930	opt.
AT960-MR	opt.
AT960-LR	opt.
TDRA6000	opt.
TM6100A	



Tripleprism Reflector

AT402	opt.
AT930	opt.
AT960-MR	opt.
AT960-LR	opt.
TDRA6000	
TM6100A	

576 234 **Tooling Ball Reflector 0.5" (TBR)**
Tooling ball glass prism reflector with
removable ring, protection cover for
optic and certificate, in wooden box
Material ball: Stainless steel,
surface-hardened, magnetic.
Also available in 5 or 10 packs. See information
and specifications page 48.



AT402	opt.
AT930	opt.
AT960-MR	opt.
AT960-LR	opt.
TDRA6000	
TM6100A	

575 848 **Reflectors for Fixed Installation (RFI) 0.5"**
Set of 5 pcs.
Ball with anodized aluminium surface,
ø 0.5" (12.7 mm).
Also available in pack of 10. See information
and specifications page 48.
*Applied for: Robot and machine operations
dynamic and static measurements*



AT402	opt.
AT930	opt.
AT960-MR	opt.
AT960-LR	opt.
TDRA6000	
TM6100A	

573 510 **Cateye Reflector (CER)**
Ball with Hardened Steel Surface
ø 75 mm (2.9528"), ±0.05 mm.
See information and specifications page 48.



AT402	opt.
AT930	opt.
AT960-MR	opt.
AT960-LR	opt.
TDRA6000	
TM6100A	

575 847 **Surface Reflector Kit**
including: Surface Reflector with lanyard,
Pin Point Stylus, 3 mm Ruby Ball Stylus,
Edge Stylus and Manual



		Quantity	Radius	Centring of Optics	Shape Ball	Acceptance angle	Weight
Red-Ring Reflectors 1.5" (RRR)							
575 784	Red-Ring Reflector 1.5"	1 pc.	19.05 mm ±0.0025 mm 0.7500 in ±0.00010 in	< ±0.003 mm < ±0.00012 in	±0.0015 mm < ±0.00006 in	±30°, no limitation due to ring	170 g 6.00 oz
576 241	Red-Ring Reflector 1.5"	2 pcs.					
576 242	Red-Ring Reflector 1.5"	5 pcs.					
576 243	Red-Ring Reflector 1.5"	10 pcs.					
Red-Ring Reflectors 7/8" (RRR)							
576 311	Red-Ring Reflector 7/8"	1 pc.	11.1125 mm ±0.0025 mm (0.4375 in ±0.0001 in)	< ±0.003 mm < ±0.00012 in	±0.0015 mm < ±0.00006 in	±30°, no limitation due to ring	35 g 1.23 oz
Red-Ring Reflectors 0.5" (RRR)							
575 739	Red-Ring Reflector 0.5"	1 pc.	6.35 mm ±0.0025 mm 0.2500 in ±0.00010 in	< ±0.003 mm < ±0.00012 in	±0.0015 mm < ±0.00006 in	±30°, no limitation due to ring	6 g 0.21 oz
576 238	Red-Ring Reflector 0.5"	2 pcs.					
576 239	Red-Ring Reflector 0.5"	5 pcs.					
576 240	Red-Ring Reflector 0.5"	10 pcs.					
Break Resistant Reflector 1.5" (BRR)							
576 244	Break Resistant Reflector 1.5"	1 pc.	19.05 mm ±0.0025 mm 0.7500 in ±0.00010 in	< ±0.010 mm < ±0.0004 in	±0.0015 mm < ±0.00006 in	≤ ±30°, no limitation due to collar	195 g 6.88 oz
Tooling Ball Reflectors 0.5" (TBR)							
576 234	Tooling Ball Reflector 0.5"	1 pc.	6.35 mm ±0.004 mm 0.2500 in ±0.00016 in	< ±0.01 mm < ±0.00039 in	±0.003 mm < ±0.00012 in	≤ ±22° (without ring: ≤ ±50°)	7 g 0.25 oz
576 235	Tooling Ball Reflector 0.5"	5 pcs.					
576 236	Tooling Ball Reflector 0.5"	10 pcs.					
Reflectors for Fixed Installation 0.5" (RFI)							
575 848	Reflectors for Fixed Installation 0.5"	1 pc.	6.35 mm 0.2500 in	not applicable	not applicable	±50°	3 g 0.11 oz
576 848	Reflectors for Fixed Installation 0.5"	5 pcs.					
576 246	Reflectors for Fixed Installation 0.5"	10 pcs.					
Cateye Reflector (CER)							
573 510	Cateye Reflector (CER)	1 pc.	37.5 mm ±0.05 mm 2.9528 in ±0.00197 in	±0.01 mm ±0.00039 in	±0.01 mm ±0.00039 in	±60°	730 g 25.75 oz

Tape Target Reflector

AT402	opt.
AT930	
AT960-MR	
AT960-LR	
TDRA6000	
TM6100A	

763 532 **GZM29, Reflective Tape, 20 x 20 mm**

for short range, pack of 20 pieces

763 533 **GZM30, Reflective Tape, 40 x 40 mm**

for mid range, pack of 20 pieces

763 534 **GZM31, Reflective Tape, 60 x 60 mm**

for long range, pack of 20 pieces



AT402	opt.
AT930	
AT960-MR	
AT960-LR	
TDRA6000	
TM6100A	

576 389 **CRT26 Circular Retro Target Tape**

outside \varnothing 26 mm, central aperture \varnothing 5 mm,
light orange, for medium range
pack of 100 pieces



AT402	opt.
AT930	
AT960-MR	
AT960-LR	
TDRA6000	
TM6100A	

574 998 **Target-kit with retro-target on magnetic target, in case, comprising:**

20 ring-shaped retro-target, central aperture
 \varnothing 5 mm, outside \varnothing 26 mm (576 389)
20x Retro-Target, 20 x 20 mm (635 317)
20x Retro-Target, 40 x 40 mm (635 318)
4x RB Bases (575 776)
1x RBC Base (575 777)
4x RT3-90 Targets (575 773)
4x RT3-45 Targets (575 774)
4x RT3-0 Targets (575 775)



AT402	opt.
AT930	
AT960-MR	
AT960-LR	
TDRA6000	
TM6100A	

575 773 **RT3-90 Tape Target**

with offset 30 mm \pm 0.05 mm, magnetic
fits to Target Base RB and RBC





575 773 **RT3-90 Tape Target**
with offset 30 mm +/-0.05 mm, magnetic,
fits to target base RB and RBC

AT402	opt.
AT930	
AT960-MR	
AT960-LR	
TDRA6000	
TM6100A	

575 774 **RT3-45 Tape Target**
with offset 30 mm ±0.05 mm, magnetic
fits to Target RB and RBC

AT402	opt.
AT930	
AT960-MR	
AT960-LR	
TDRA6000	
TM6100A	

575 775 **RT3-0 Tape Target**
with offset 30 mm ±0.05 mm, magnetic
fits to Target Base RB and RBC

AT402	opt.
AT930	
AT960-MR	
AT960-LR	
TDRA6000	
TM6100A	

575 776 **RB Magnetic Target Base**
with offset 10 mm ±0.05 mm, magnetic
fits to Tape Targets RT3

575 777 **RBC Magnetic Target Base**
with offset 10 mm ±0.05 mm, fits to tape
targets RT3, with central bolt hole and locating
pin

AT402	opt.
AT930	
AT960-MR	
AT960-LR	
TDRA6000	
TM6100A	

575 088 **Pass Point-Retro Target Set**
in case, comprising:
3 Swivel Targets with Retro Reflective Foils
ø 45 mm, h=75 mm, 3 Magnetic Bases

AT402	opt.
AT930	
AT960-MR	
AT960-LR	
TDRA6000	
TM6100A	

Special Reflectors and Holders
(Leica TDRA6000 only)

AT402	opt.
AT930	
AT960-MR	
AT960-LR	
TDRA6000 TM6100A	

575 940 **Roller Alignment Target Fixture**
comprising:
2 Floor Fixtures, 1 Roller Fixture, 2 RT3-90
Targets (575 773), 2 RT3-45 Targets (575 774),
excluding CCR 1.5" Reflector and CCR 1.5"
Supports



AT402	opt.
AT930	
AT960-MR	
AT960-LR	
TDRA6000 TM6100A	

574 999 **Hidden Point Bar, 0.5 m**
with Tape Targets



AT402	opt.
AT930	
AT960-MR	
AT960-LR	
TDRA6000 TM6100A	

573 487 **Magnetic Support for Hidden Point Bar, 0.5 m**



AT402	opt.
AT930	opt.
AT960-MR	
AT960-LR	
TDRA6000 TM6100A	

641 662 **GMP101 Mini Prism Set**
incl. bubble, target plate and spike, in bag, also
suitable for GLS11 and GRT44 (same height as
GPH1, additive constant +17.5 mm)



AT402	opt.
AT930	opt.
AT960-MR	
AT960-LR	
TDRA6000 TM6100A	

555 631 **GPH1P Single Prism Precision Reflector**



Targets for Multiple
Theodolite Systems



571 549 **Self-Adhesive Target Foils**
black/white, ø 23 mm, 48 pieces on one sheet

AT402	opt.
AT930	
AT960-MR	
AT960-LR	
TDRA6000	
TM6100A	



800 742 **Scale Bar 0,9 m**
carbon fibre, incl. Producer Inspection
Certificate, in carrying case

AT402	opt.
AT930	
AT960-MR	
AT960-LR	
TDRA6000	
TM6100A	



574 681 **Orientation Target**
magnetic

AT402	opt.
AT930	
AT960-MR	
AT960-LR	
TDRA6000	
TM6100A	



575 854 **Sphere Fit Tool**
for Cateye Reflector

AT402	opt.
AT930	
AT960-MR	
AT960-LR	
TDRA6000	
TM6100A	



576 142 **Light Duty Magnetic Holder**
for Tooling Ball Reflectors 0.5"

AT402	opt.
AT930	
AT960-MR	
AT960-LR	
TDRA6000	
TM6100A	

AT402	opt.
AT930	opt.
AT960-MR	opt.
AT960-LR	opt.
TDRA6000	opt.
TM6100A	

576 249 **MAT22, Pass Point Target Kit**
8x Non magnetic target base to be affixed with hot glue. 5x Neodym magnetic target base with magnetic shield for transportation and storage. In case with spare cutout for CCR 1,5" reflector (not included), dimension 250 x 200 x 70 mm, weight with targets 1.1 kg.



AT402	opt.
AT930	opt.
AT960-MR	opt.
AT960-LR	opt.
TDRA6000	opt.
TM6100A	

576 850 **Magnetic NORS Reflector Support**
for 1,5" Reflectors RRR & BRR



AT402	opt.
AT930	opt.
AT960-MR	opt.
AT960-LR	opt.
TDRA6000	opt.
TM6100A	

576 851 **Magnetic NORS Reflector Support Kit**
for 1,5" Reflectors RRR & BRR (Kit of 5 units)

Compensation and
Field Check Tools



575 415 **Precision Ball Bar, Motorized**
with counter weight, without reflector support.
Compatible with Leica Absolute Tracker AT901.

AT402
AT930
AT960-MR
AT960-LR
TDRA6000
TM6100A



575 090 **Adapter to Ball Bar for Tripods
with 5/8" Thread**
allows to mount a Ball Bar and a Magnetic
Reflector Holder on a tripod, (Ball Bar and
Reflector Holder are not included). Compatible
with Leica Absolute Tracker AT901.

AT402
AT930
AT960-MR
AT960-LR
TDRA6000
TM6100A



575 836 **IFM Distance Tool**
to re-determine the birdbath distance for TBR
and 1.5" CCR Reflectors, 12 mm bore holes for
reflector supports (supports not included).
Compatible with Leica Absolute Tracker AT901.

AT402
AT930
AT960-MR
AT960-LR
TDRA6000
TM6100A



575 837 **Tripod Adapter**
to be used for various alignment or compen-
sation measurements. Thread for tripod 5/8".
Bore hole 12 mm (supports not included)
- Tripod reflector holder for consistent
reference point
- Drawn to scale
- Steel with black oxide finish

AT402
AT930
AT960-MR
AT960-LR
TDRA6000
TM6100A
opt.
opt.
opt.



575 484 **AT28 Aluminium Tripod**
with adjustable centre column. Robust, well-
established tripod for general use and 5/8"
thread. Suitable for Laser Stations, Theodolites
and Laser Tracker field check equipment.
Instrument height: from 1.4 – 2.8 m (4.6 – 9.2 ft)
Weight: 12 kg (26.4 lb)

AT402
AT930
AT960-MR
AT960-LR
TDRA6000
TM6100A

AT402	opt.
AT930	opt.
AT960-MR	opt.
AT960-LR	opt.
TDRA6000	opt.
TM6100A	

575 483 **AT21 Aluminium Tripod**
Robust, well-established tripod for general use and 5/8" thread. Suitable for Total Stations, Theodolites and Laser Tracker field check equipment.
Instrument height: from 1.4 – 2.1 m (4.6 – 6.9 ft)
Weight: 11 kg (24.2 lb)



AT402	opt.
AT930	opt.
AT960-MR	opt.
AT960-LR	opt.
TDRA6000	opt.
TM6100A	

804 011 **Magnetic Reflector Holder**
for reflectors in spherical housings, ø 1.5" with bolt hole for 575 497





803 728

Magnetic Reflector Holder

for reflectors in spherical housings, \varnothing 75 mm with bolt hole for 575 497 and 575 599.

- Tripod reflector holder for consistent reference point
- Drawn to scale
- Steel with black oxide finish

AT402	opt.
AT930	opt.
AT960-MR	opt.
AT960-LR	opt.
TDRA6000	
TM6100A	



576 401

Mirror Tool

to measure distances between 2 points with Laser Tracker using interferometer only. This basic set includes 2 holders with reflector holders for 0.5" and 1.5" (2 units each version 576 073 and 576 096). This tool can be used also to generate nominal distance values for the planned VDI/VDE standard

AT402	opt.
AT930	opt.
AT960-MR	opt.
AT960-LR	opt.
TDRA6000	
TM6100A	



576 402

Reflector Mount

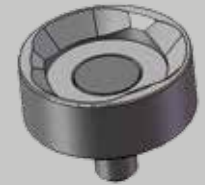
which can be mounted on a tripod or fix installed at a stabil location to establish nominal distances for comparison measurements. To support 0.5" and 1.5" CCR's Magnetic Reflector Holders version

576 073 and 576 096 are recommended

AT402	opt.
AT930	opt.
AT960-MR	opt.
AT960-LR	opt.
TDRA6000	
TM6100A	

1.5" Reflector Holders

		Offset	Shank	Body	Material
577 011	Reflector Holder 1.5"	24 mm	ø 6 mm	ø 25.4 mm	stainless steel
577 002	Reflector Holder 1.5"	24 mm	ø 8 mm	ø 25.4 mm	stainless steel
577 003	Reflector Holder 1.5"	24 mm	ø 12 mm	ø 25.4 mm	stainless steel
577 101	Reflector Holder 1.5"	25 mm	ø 6 mm	ø 25.4 mm	stainless steel
577 102	Reflector Holder 1.5"	25 mm	ø 8 mm	ø 25.4 mm	stainless steel
577 103	Reflector Holder 1.5"	25 mm	ø 10 mm	ø 25.4 mm	stainless steel
577 104	Reflector Holder 1.5"	25 mm	ø 12 mm	ø 25.4 mm	stainless steel
577 120	Reflector Holder 1.5"	1.0000"	ø 0.2500"	ø 1.000"	stainless steel



577 125	Reflector Holder 1.5"	24 mm	shankless	ø 40.64 mm	stainless steel
577 126	Reflector Holder 1.5"	25 mm	shankless	ø 40.64 mm	stainless steel
577 127	Reflector Holder 1.5"	1.0000"	shankless	ø 1.6000"	stainless steel



577 128	Reflector Holder 1.5"	24 mm	shankless	ø 40.64 mm	stainless steel, magnetic base
577 129	Reflector Holder 1.5"	25 mm	shankless	ø 40.64 mm	stainless steel, magnetic base
577 130	Reflector Holder 1.5"	1.0000"	shankless	ø 1.6000"	stainless steel, magnetic base





577 135 **Edge Reflector Holder 1.5"**
577 136 **Edge Reflector Holder 1.5"**
577 137 **Edge Reflector Holder 1.5"**

Offset

24 mm
25 mm
1.0000"

Shank

Body

Material

stainless steel
stainless steel
stainless steel



577 140 **Drift Nest 1.5"**

1.0000"

aluminum



576 102 **Foundation Reflector Holder 1.5"**



576 134 **Tripod Reflector Holder 1.5"**

AT402	opt.
AT930	opt.
AT960-MR	opt.
AT960-LR	opt.
TDRA6000	opt.
TM6100A	

AT402	opt.
AT930	opt.
AT960-MR	opt.
AT960-LR	opt.
TDRA6000	opt.
TM6100A	

576 104 **Leica Lanyard Set 1 (full)**
for safe handling of 1.5" reflectors



AT402	opt.
AT930	opt.
AT960-MR	opt.
AT960-LR	opt.
TDRA6000	opt.
TM6100A	

576 105 **Leica Lanyard Set 2 (partial)**
for safe handling of 1.5" reflectors





0.5" Reflector Holders

		Offset	Shank	Body	Material
577 201	Reflector Holder 0.5"	10 mm	ø 5 mm	ø 12.7 mm	stainless steel
577 202	Reflector Holder 0.5"	10 mm	ø 6 mm	ø 12.7 mm	stainless steel
577 203	Reflector Holder 0.5"	10 mm	ø 8 mm	ø 12.7 mm	stainless steel
577 204	Reflector Holder 0.5"	10 mm	ø 10 mm	ø 0.75"	stainless steel
576 068	Reflector Holder 0.5"	10 mm	ø 5 mm		stainless steel
576 073	Reflector Holder 0.5"	10 mm	ø 10 mm		stainless steel, magnetic base
577 205	Reflector Holder 0.5"	10 mm	ø 12 mm	ø 0.75"	stainless steel
577 206	Reflector Holder 0.5"	12 mm	ø 6 mm	ø 12.7 mm	stainless steel
577 207	Reflector Holder 0.5"	12 mm	ø 8 mm	ø 12.7 mm	stainless steel
577 208	Reflector Holder 0.5"	12 mm	ø 12 mm	ø 0.75"	stainless steel
577 209	Reflector Holder 0.5"	0.3125"	ø 0.2500"	ø 0.5000"	stainless steel
577 210	Reflector Holder 0.5"	0.5000"	ø 0.2500"	ø 0.5000"	stainless steel



577 220	Reflector Holder 0.5"	10 mm	shankless	ø 12.7 mm	stainless steel, magnetic base
577 221	Reflector Holder 0.5"	12 mm	shankless	ø 12.7 mm	stainless steel, magnetic base
577 222	Reflector Holder 0.5"	0.5000"	shankless	ø 0.5000"	stainless steel, magnetic base

AT402	opt.
AT930	opt.
AT960-MR	opt.
AT960-LR	opt.
TDRA6000	opt.
TM6100A	

AT402	opt.
AT930	opt.
AT960-MR	opt.
AT960-LR	opt.
TDRA6000	opt.
TM6100A	

577 230 **Reflector Holder 0.5" Drift Nest**
Offset 0.5000", stainless steel



AT402	opt.
AT930	opt.
AT960-MR	opt.
AT960-LR	opt.
TDRA6000	opt.
TM6100A	

577 235 **Reflector Holder 0.5" Target Corner**
Offset 0.5000", stainless steel



AT402	opt.
AT930	opt.
AT960-MR	opt.
AT960-LR	opt.
TDRA6000	opt.
TM6100A	

577 240 **Magnetic Holder with Zero Thickness for 0.5" reflectors**
Steel black oxide finish





576 131

Double Vector for TBR

- Holds 2 0.5" reflectors on centreline and critical offsets to represent the centreline and direction of a hole
- Drawn to scale
- Centring and height tolerance within 0.0127 mm (0.0005")
- Steel with black oxide finish

AT402
AT930
AT960-MR
AT960-LR
TDRA6000
TM6100A

opt.
opt.
opt.
opt.



576 052

Heavy Duty Magnetic Holder for TBR
for tooling ball reflectors 0.5"

AT402
AT930
AT960-MR
AT960-LR
TDRA6000
TM6100A

opt.
opt.
opt.
opt.

Miscellaneous



576 055

Heavy Duty Magnetic Reflector Holder Adaptorfor supports with shank \varnothing 12 mm

AT402
AT930
AT960-MR
AT960-LR
TDRA6000
TM6100A

opt.
opt.
opt.
opt.
opt.



576 122

Foundation Target Insert

- Mounts to concrete floor foundations for permanent targeting reference
- Drawn to scale

AT402
AT930
AT960-MR
AT960-LR
TDRA6000
TM6100A

opt.
opt.
opt.
opt.
opt.

AT402	opt.
AT930	
AT960-MR	
AT960-LR	
TDRA6000	
TM6100A	

577 255 **1.5" Laser Station Sphere**
A 1.5" Sphere for 3D manual sighting applications



AT402	opt.
AT930	opt.
AT960-MR	opt.
AT960-LR	opt.
TDRA6000	
TM6100A	

577 259 **1.5" to 0.5" Adapter**
To be able to use a 0.5" reflector in a 1.5" nest





577 250

Leica Geosystems Laser Tracker – Imperial Reflector Holder Kit

Consisting of:

- 3 x 577 230 Reflector Holder 0.5" Drift Nest, offset 0.5000", stainless steel
- 1 x 577 235 Reflector Holder 0.5" Target Corner, offset 0.5000", stainless steel
- 1 x 577 210 Reflector Holder 0.5", offset 0.5000", shank \varnothing 0.2500", body \varnothing 0.5000", stainless steel
- 1 x 576 131 Double Vector for TBR, shank \varnothing 0.2500", steel black oxide finish
- 1 x 577 120 Reflector Holder 1.5", offset 1.0000", shank \varnothing 0.2500", Body \varnothing 1.000", stainless steel
- 1 x 577 127 Reflector Holder 1.5", offset 1.0000", shankless, body \varnothing 1.6000", stainless steel
- 1 x 577 137 Edge Reflector Holder 1.5", offset 1.0000", stainless steel
- 2 x 576 134 Tripod Reflector Holder 1.5"
- 6 x 577 140 Drift Nest 1.5", offset 1.0000", aluminum

AT402
AT930
AT960-MR
AT960-LR
TDRA6000
TM6100A

opt.
opt.
opt.
opt.
opt.

AT402
AT930
AT960-MR
AT960-LR
TDRA6000
TM6100A

opt.
opt.
opt.
opt.
opt.

577 251

Leica Geosystems Laser Tracker – Metric Reflector Holder Kit

Consisting of:

- 3 x 577 221 Reflector Holder 0.5", offset 12 mm, body \varnothing 12.7 mm, shankless, magnetic base, stainless steel
- 1 x 577 202 Reflector Holder 0.5", offset 10 mm, shank \varnothing 6 mm, body \varnothing 12.7 mm, stainless steel
- 1 x 577 203 Reflector Holder 0.5", offset 10 mm, shank \varnothing 8 mm, body \varnothing 12.7 mm, stainless steel
- 1 x 577 205 Reflector Holder 0.5", offset 10 mm, shank \varnothing 12 mm, body \varnothing 12.7 mm, stainless steel
- 1 x 577 206 Reflector Holder 0.5", offset 12 mm, shank \varnothing 6 mm, body \varnothing 12.7 mm, stainless steel
- 1 x 577 207 Reflector Holder 0.5", offset 12 mm, shank \varnothing 8 mm, body \varnothing 12.7 mm, stainless steel
- 1 x 577 208 Reflector Holder 0.5", offset 12 mm, shank \varnothing 12 mm, body \varnothing 12.7 mm, stainless steel
- 1 x 577 101 Reflector Holder 1.5", offset 25 mm, shank \varnothing 6 mm, body \varnothing 25.4 mm, stainless steel
- 1 x 577 102 Reflector Holder 1.5", offset 25 mm, shank \varnothing 8 mm, body \varnothing 25.4 mm, stainless steel
- 1 x 577 104 Reflector Holder 1.5", offset 25 mm, shank \varnothing 12 mm, body \varnothing 25.4 mm, stainless steel
- 1 x 577 126 Reflector Holder 1.5", offset 25 mm, shankless, body \varnothing 40.6 mm, stainless steel
- 1 x 577 136 Edge Reflector Holder 1.5", offset 25 mm, stainless steel
- 2 x 576 134 Tripod Reflector Holder 1.5"
- 6 x 577 140 Drift Nest 1.5", offset 1.0000", aluminum



Leica TM6100A Industrial Theodolite

576 372

Leica TM6100A Motorized Industrial Theodolite

with pan focal telescope and build-in autocollimation eyepiece.
Including user manual, upright container and Calibration Certificate
Metrology (angle).



Leica TDRA6000 Laser Station

576 373 **Leica TDRA6000 Motorized Industrial Laser Station**

with automatic target recognition, Power Search, and reflectorless EDM. Dual face industrial keyboard and large illuminated display. Compartment for internal battery and memory card, two-axes compensator, motor controlled slow motion drives for Hz and V settings, friction coupling, optical sight in both faces. Including user manual, upright container and Calibration Certificate Metrology, angle and distances with both reflector and reflectorless EDM. (1.5"RRR, Retro-Reflective Tape).



Additional Options



576 528 **GTS39 Optional 2nd Keyboard**
with touch screen and color display, for Leica
TM6100A instruments, for telescope position 2
(576528: Factory fitted
576529: Retro-fitted by Service Center)

AT402	
AT930	
AT960-MR	
AT960-LR	
TDRA6000	
TM6100A	opt.



799 658 **SPF03 Screen Protection**
Reserve or replacement touch screen pro-
tection foil for TPS6000 instruments against
scratches and dirt.

AT402	
AT930	
AT960-MR	
AT960-LR	
TDRA6000	opt.
TM6100A	opt.



6003 628 **TDRA6000 Accessory Set**
Consisting of: GDF321-I, Industrial Tribrach
w/o opt. Plummets, 2 GEB242 Li-Ion Batteries,
GKL341 Charger, MCF256 Compact Flash Card,
GEV269 Data Transfer Cable Lemo1 / USB

AT402	
AT930	
AT960-MR	
AT960-LR	
TDRA6000	opt.
TM6100A	opt.

Power Supply

AT402	opt.
AT930	
AT960-MR	
AT960-LR	
TDRA6000	opt.
TM6100A	opt.

793 975 **GEB242 Battery**
Internal battery, Li-Ion 14.8V, 5.8 Ah



AT402	
AT930	
AT960-MR	
AT960-LR	
TDRA6000	opt.
TM6100A	opt.

727 367 **GEB171 External Battery**
12V, 9 Ah, Ni-MH, rechargeable



AT402	
AT930	
AT960-MR	
AT960-LR	
TDRA6000	opt.
TM6100A	opt.

807 696 **GEV270 Power Supply Unit for TPS5000/6000**
for TPS/GPS, for indoor use only.
Input 100-240VAC to output 13.8VDC,
with connection for Power Cables



AT402	
AT930	
AT960-MR	
AT960-LR	
TDRA6000	opt.
TM6100A	opt.

575 427 **T_LINK Interface**
Power supply unit for TPS, for indoor use only.
Input 94-265VAC to output 12VDC
(connects up to 4 TPS6000 instruments or up
to 8 TPS5000 instruments)



Battery Chargers



799 187 **GKL341 multiple-bay charger Professional 5000**
Multi-bay charger for up to 4x Li-Ion batteries GB241/GEB242. The refresh functionality allows to re-align the battery capacity displayed after extensive usage. AC Adapter included.

AT402	opt.
AT930	
AT960-MR	
AT960-LR	
TDRA6000	opt.
TM6100A	opt.

Data Storage and Data Transfer



733 257 **MCF256 Compact Flash Card**
256MB

AT402	
AT930	
AT960-MR	
AT960-LR	
TDRA6000	opt.
TM6100A	opt.



733 258 **MCFAD1 Compact Flash PC Card Adapter**

AT402	
AT930	
AT960-MR	
AT960-LR	
TDRA6000	opt.
TM6100A	opt.



776 240 **MCR8 CF/SD/SRAM Card Reader**
USB card reader for SD/CF and SRAM cards

AT402	
AT930	
AT960-MR	
AT960-LR	
TDRA6000	opt.
TM6100A	opt.

Power Cables

AT402	opt. opt.
AT930	
AT960-MR	
AT960-LR	
TDRA6000	
TM6100A	

576 521 **GEV286-I, Power Cable, 20m**
Connects TPS6000 instrument with external power supply T_Link/GEV270 or battery GEB171



AT402	opt. opt.
AT930	
AT960-MR	
AT960-LR	
TDRA6000	
TM6100A	

758 469 **GEV219 Power Cable, 1.8m**
Connects external battery GEB171 to TM30/TS30 or Leica TDRA6000 instrument



AT402	opt. opt.
AT930	
AT960-MR	
AT960-LR	
TDRA6000	
TM6100A	

759 257 **GEV220 Y-Cable, 2.0m**
Connects TM30/TS30 or Leica TDRA6000 to PC (9-pin RS232 serial) and external battery



AT402	opt. opt.
AT930	
AT960-MR	
AT960-LR	
TDRA6000	
TM6100A	

800 497 **Cable Spool**
for 20 m/40 m cables
(without cable)



Data Transfer Cables and Converter



733 282

GEV162 Data Transfer Cable, 2.8 m

Connects GPS1200+ receiver RX controller port
or Leica TM30/TS30 or Leica TDRA6000
to PC for data transfer, firmware upload etc.
lemo to 9 pin RS232 serial connector

AT402
AT930
AT960-MR
AT960-LR
TDRA6000
TM6100A

opt.
opt.



806 095

GEV269, 2m Data Transfer Cable

Converter cable USB to serial (Lemo to USB
A connector), connects instrument to PC, PC
driver included on CD

AT402
AT930
AT960-MR
AT960-LR
TDRA6000
TM6100A

opt.
opt.



758 513

Adapter Cable Leica TPS6000

(Lemo 0 - Lemo 1), Used to convert Leica
TPS5000 cables. Used to work with TPS6000
sensors on existing Leica TPS5000 cables

AT402
AT930
AT960-MR
AT960-LR
TDRA6000
TM6100A

opt.
opt.



576 388

RS232 Serial - USB Adapter

Used to convert 9-pin RS232 connectors into
USB connections

AT402
AT930
AT960-MR
AT960-LR
TDRA6000
TM6100A

opt.
opt.



707 525

GK1 Lemo Canon Converter

30°, for PC

AT402
AT930
AT960-MR
AT960-LR
TDRA6000
TM6100A

opt.
opt.

Tripods

AT402	opt.
AT930	
AT960-MR	
AT960-LR	
TDRA6000	opt.
TM6100A	opt.

296 632 **GST20 Tripod Telescopic, with accessories**
Robust, well-established tripod for general use. Suitable for levels, lasers, Laser Stations and GPS. Extendible 180 cm (5.9 ft)
Weight: 6.4 kg (14.1 lb)



AT402	opt.
AT930	
AT960-MR	
AT960-LR	
TDRA6000	opt.
TM6100A	opt.

332 200 **GST4 Tripod Base**
for setting up GST Tripods on smooth surfaces



AT402	opt.
AT930	
AT960-MR	
AT960-LR	
TDRA6000	opt.
TM6100A	opt.

575 483 **AT21 Aluminum Tripod**
Robust, well-established tripod for general use and 5/8" thread. Suitable for Laser Stations, Theodolites and Laser Tracker field check equipment. Instrument height: from 1.4 – 2.1 m (4.6 – 6.9 ft)
Weight: 11 kg (24.2 lb)



AT402	opt.
AT930	
AT960-MR	
AT960-LR	
TDRA6000	opt.
TM6100A	opt.

575 484 **AT28 Aluminum Tripod**
with adjustable centre column. Robust, well-established tripod for general use and 5/8" thread. Suitable for Laser Stations, Theodolites and Laser Tracker field check equipment.
Instrument height: from 1.4 - 2.8 m (4.6 - 9.2 ft)
Weight: 12 kg (26.4 lb)





417 677 **GMT5 Measuring Slide**
(Single direction) with maximum working range
40 mm; least count 0.01 mm

AT402	opt.
AT930	
AT960-MR	
AT960-LR	
TDRA6000	opt.
TM6100A	opt.



417 678 **GAD12 Adapter Set**
for mounting GMT5 translation stage onto any
Leica Geosystems tribrach; includes tribrach
to mount instrument; typical adapter set for
Theodolites and Laser Stations

AT402	opt.
AT930	
AT960-MR	
AT960-LR	
TDRA6000	opt.
TM6100A	opt.



417 679 **GAD13 Adapter Set**
for mounting GMT5 translation stage onto 5/8"
thread; includes adapter plate with 5/8" thread
to mount instruments; typical adapter set for
levels

AT402	opt.
AT930	
AT960-MR	
AT960-LR	
TDRA6000	opt.
TM6100A	opt.

Tribrachs

AT402	opt.
AT930	
AT960-MR	
AT960-LR	opt.
TDRA6000	
TM6100A	opt.

576 352 **GDF 321-I, Tribrach Pro**
without optical plummet, light grey



AT402	opt.
AT930	
AT960-MR	
AT960-LR	opt.
TDRA6000	
TM6100A	opt.

576 353 **GDF322-I Industrial Tribrach**
with optical, plummet, light grey



AT402	opt.
AT930	
AT960-MR	
AT960-LR	opt.
TDRA6000	
TM6100A	opt.

577 261 **3½" x 8" to 5/8" x 11" Adapter**
to mount a TPS or Leica AT402 sensor on a heavy duty "Brunson" type stand



Eyepieces, Filters, DL2 Lasers and Autocollimation Accessories



308 838 **FOK53 Eyepiece**
44 x magnification at 10 m (30ft), optically adjusted and fitted in factory (only to be ordered with new instrument)

AT402	opt. opt.
AT930	
AT960-MR	
AT960-LR	
TDRA6000	
TM6100A	



743 504 **GV013 Objective Sun-Filter**

AT402	opt. opt.
AT930	
AT960-MR	
AT960-LR	
TDRA6000	
TM6100A	



793 979 **GFZ3 Diagonal Eyepiece**
for telescope, except T100

AT402	opt.
AT930	
AT960-MR	
AT960-LR	
TDRA6000	
TM6100A	



376 236 **GOK6 Eyepiece**
for steep sights, with joint allowing variable sighting angle

AT402	opt. opt.
AT930	
AT960-MR	
AT960-LR	
TDRA6000	
TM6100A	



712 504 **Counterweight for Leica TM5100A/TM6100A**
if steep angle GOK6 Eyepiece is attached

AT402	opt.
AT930	
AT960-MR	
AT960-LR	
TDRA6000	
TM6100A	

AT402	opt.
AT930	
AT960-MR	
AT960-LR	
TDRA6000	
TM6100A	

433 472 **GUS29 Internal Target**
for collimation measurements
(Factory fit to Leica TM5100A / Leica TM6100A)



Autocollimation Accessories

AT402	opt.
AT930	
AT960-MR	
AT960-LR	
TDRA6000	
TM6100A	

199 899 **GOA2 Autocollimation Eyepiece**
(Leica TDRA6000 only)



AT402	opt.
AT930	
AT960-MR	
AT960-LR	
TDRA6000	
TM6100A	

394 787 **GEB62 Plug-In Lamp**
with cable to battery
(Leica TDRA6000 only)



AT402	opt.
AT930	
AT960-MR	
AT960-LR	
TDRA6000	
TM6100A	

394 792 **GEB63 Battery Box**
for autocollimation eyepiece and eyepiece lamp.
Does not include 9V battery
(Leica TDRA6000 only)





575 725 **AL51 Plug in Lamp**
Leica TM5100A/TM6100A

AT402	
AT930	
AT960-MR	
AT960-LR	
TDRA6000	
TM6100A	opt.



392 368 **GAS1 Autocollimation Mirror**
ø 50 mm, in case

AT402	
AT930	
AT960-MR	
AT960-LR	
TDRA6000	
TM6100A	opt.



574 822 **DL2 Diode Laser Eyepiece**
with user manual, in case

AT402	
AT930	
AT960-MR	
AT960-LR	
TDRA6000	
TM6100A	opt.



723 231 **Counterweight for Leica TM6100A**
if Diode Laser DL2/3 is attached

AT402	
AT930	
AT960-MR	
AT960-LR	
TDRA6000	
TM6100A	opt.



574 835 **Intensity Regulator for DL/3**

AT402	
AT930	
AT960-MR	
AT960-LR	
TDRA6000	
TM6100A	opt.

AT402	opt. opt.
AT930	
AT960-MR	
AT960-LR	
TDRA6000	
TM6100A	

575 498 **Tripod Bracket**
In order to attach accessories (Battery, DL2 Intensity Regulator, Radio Modem) to AT21/28 Tripods



Cables

AT402	opt.
AT930	
AT960-MR	
AT960-LR	
TDRA6000	
TM6100A	

574 834 **Cable 1 m**
connects DL2 and Intensity Regulator



AT402	opt.
AT930	
AT960-MR	
AT960-LR	
TDRA6000	
TM6100A	

409 678 **GEV52 Data Cable 1.8 m**
connects instrument or intensity regulator DL2 with External Power Supply T_LINK/GEV208 or Battery GEB70/171



AT402	opt.
AT930	
AT960-MR	
AT960-LR	
TDRA6000	
TM6100A	

527 497 **GEV86 Data Cable 20 m**
connects DL2/3 intensity regulator with external power supply T_LINK/GEV208 or Battery GEB171



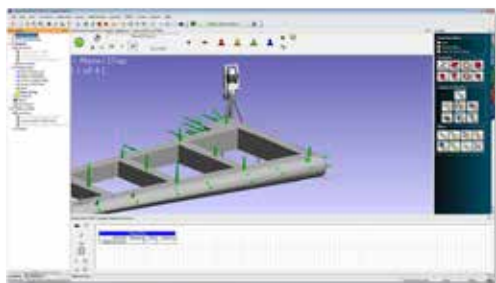
AT402	opt.
AT930	
AT960-MR	
AT960-LR	
TDRA6000	
TM6100A	

576 387 **GEV64-I Power Cable 1.2 m**
connects instrument with DL2/3 Intensity Regulator



Spatial Analyzer®

Powerful and traceable metrology and analysis software



SpatialAnalyzer® (SA) is a powerful, traceable and easy to use metrology and analysis software package, tailored for the Hexagon Metrology portable CMM family.

SA offers a vast number of benefits, including:

- Intuitive, state of the art graphical environment
- Interfaces to all Hexagon Metrology portable CMMs
- All common CAD exchange and native formats
- Advanced analysis and processing and unique alignment techniques
- Easy multiple instrument station bundling
- True GD&T and feature checks
- Numerous reporting options
- Measurement uncertainty calculation
- USMN to achieve the ideal instrument network
- Integrated Modern Scripting Language to automate complete workflows
- Multiple language support
- Free SA Viewer to share SA job files easily

SpatialAnalyzer® makes metrology easy.

576 728 **Spatial Analyzer Professional**

576 729 **Spatial Analyzer Ultimate**

AT402	opt.
AT930	opt.
AT960-MR	opt.
AT960-LR	opt.
TDRA6000	opt.
TM6100A	opt.

For more details see

http://www.leica-geosystems.com/en/SpatialAnalyzerreg_101174.htm

PC-DMIS Portable for Laser Trackers

Bringing Metrology to the Shop Floor

PC-DMIS Portable for Laser Trackers is part of the PC-DMIS suite – the leader in global 3D inspection SW with more than 20'000 licenses sold. PC-DMIS allows you to use one software suite for all Hexagon Measurement devices. This provides you with the same look and feel across all your inspection tasks, hence decreasing training cost and make use of your inspection specialists in a much more flexible way.



AT402
AT930
AT960-MR
AT960-LR
TDRA6000
TM6100A

opt.
opt.
opt.
opt.
opt.

576 700

PC-DMIS Pro

is a fully featured metrology software and the perfect choice for non-CAD applications.

AT402
AT930
AT960-MR
AT960-LR
TDRA6000
TM6100A

opt.
opt.
opt.
opt.
opt.

576 702

PC-DMIS CAD++

extends the range of applications to any CAD related measurement task and provides special tool kits for sheet metal inspection, scanning or point cloud management.

For more details see

http://www.leica-geosystems.com/en/PC-DMIS-Portable-for-Laser-Trackers_67884.htm



DCP Solutions

for Leica TDRA6000 and
Leica Absolute Tracker AT401/402

The complete solution for truly large-scale assembly and inspection based on Leica Geosystems Industrial Total Stations, provided by our Finnish partner A.M.S. and supplied by Leica Geosystems.

DCP Pocket is a mobile large volume metrology software package on a fully rugged Pocket-PC.

DCP05 is a 3D software included with every Leica TDRA6000 to quickly inspect and assemble parts, even on design data.

DCP Project gives you an analysis and job-preparation tool for all DCP05 and DCP Pocket measurements incl. MS Excel® based reporting.

AT402	opt.
AT930	
AT960-MR	
AT960-LR	
TDRA6000	opt.
TM6100A	

576 424

DCP Pocket

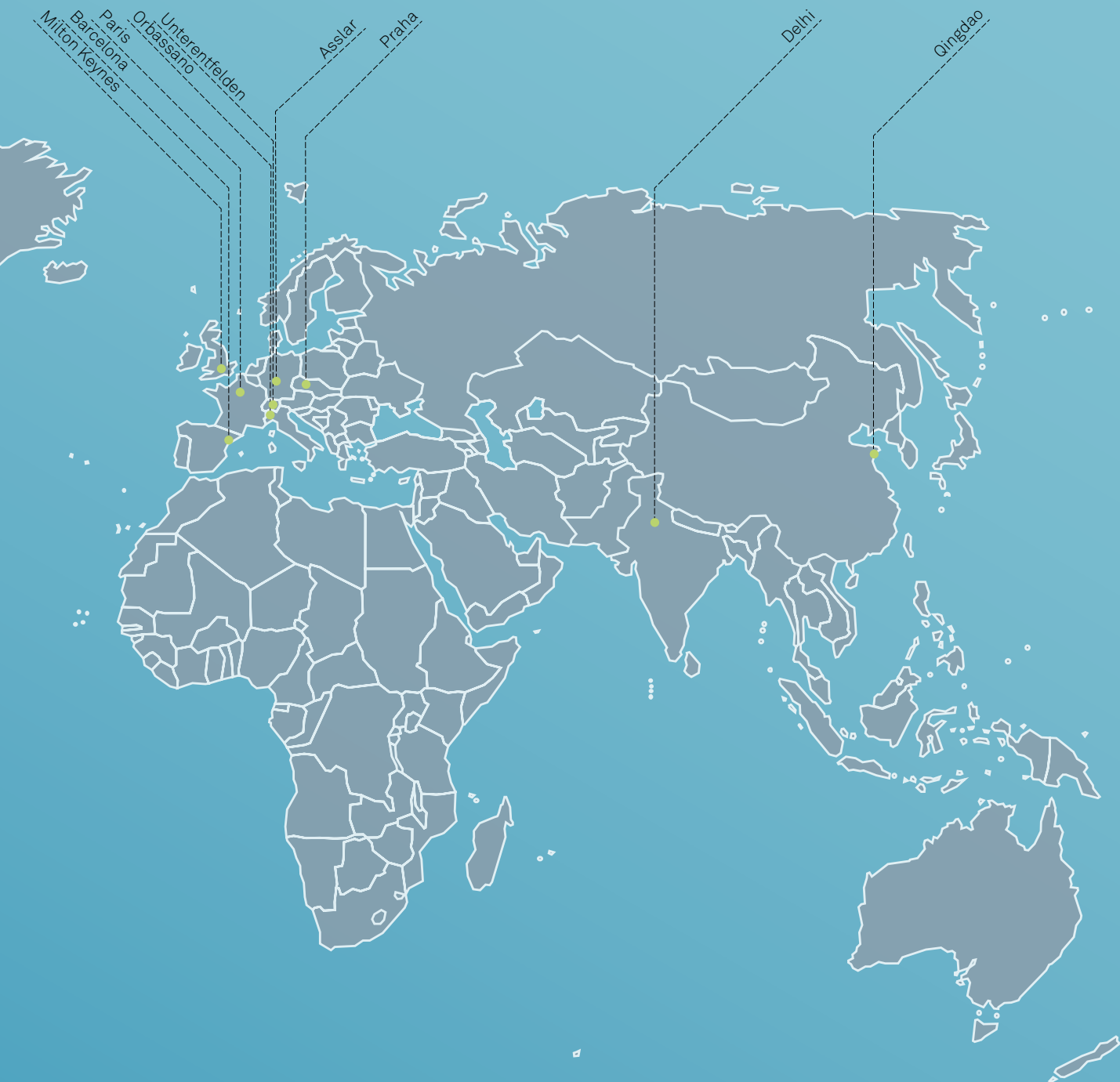
is a mobile large volume metrology software package on a fully rugged Pocket-PC offering:

- Wireless Sensor Communication / Data Exchange
- IP54 / 67 Standard for truly Industrial Applications
- Feature Based Measurements and Reflectorless Scanning
- Sunlight readable touch screens
- Motorized and Automatic Inspection
- Data Viewer with Feature Group Display and Laser Pointer Function
- Automatic Point Recognition during Move Station Process
- Compatibility with DCP Project and DCP 05 Onboard

For more details see

http://www.leica-geosystems.com/en/DCP-Solutions-for-Leica-TDRA6000-and-Leica-Absolute-Tracker-AT401402_1669.htm







HEXAGON
METROLOGY

www.hexagonmetrology.com







Hexagon Metrology offers a comprehensive range of products and services for all industrial metrology applications in sectors such as automotive, aerospace, energy and medical. We support our customers with actionable measurement information along the complete life cycle of a product – from development and design to production, assembly and final inspection.

With more than 20 production facilities and 70 Precision Centres for service and demonstrations, and a network of over 100 distribution partners on five continents, we empower our customers to fully control their manufacturing processes, enhancing the quality of products and increasing efficiency in manufacturing plants around the world. For more information, visit **www.hexagonmetrology.com**.

Hexagon is a leading global provider of information technologies that drive productivity and quality across industrial and geospatial applications. Hexagon's solutions integrate sensors, software, domain knowledge and customer workflows into intelligent information ecosystems that deliver actionable information. They are used in a broad range of vital industries.

Hexagon (Nasdaq Stockholm: HEXA B) has more than 15,000 employees in 46 countries and net sales of approximately 2.6bn EUR. Learn more at **www.hexagon.com**.

© 2015 Hexagon Metrology. Part of Hexagon

All rights reserved. Due to continuing product development, Hexagon Metrology reserves the right to change product specifications without prior notice.

Printed in Germany. May 2015